

SPEEDflex

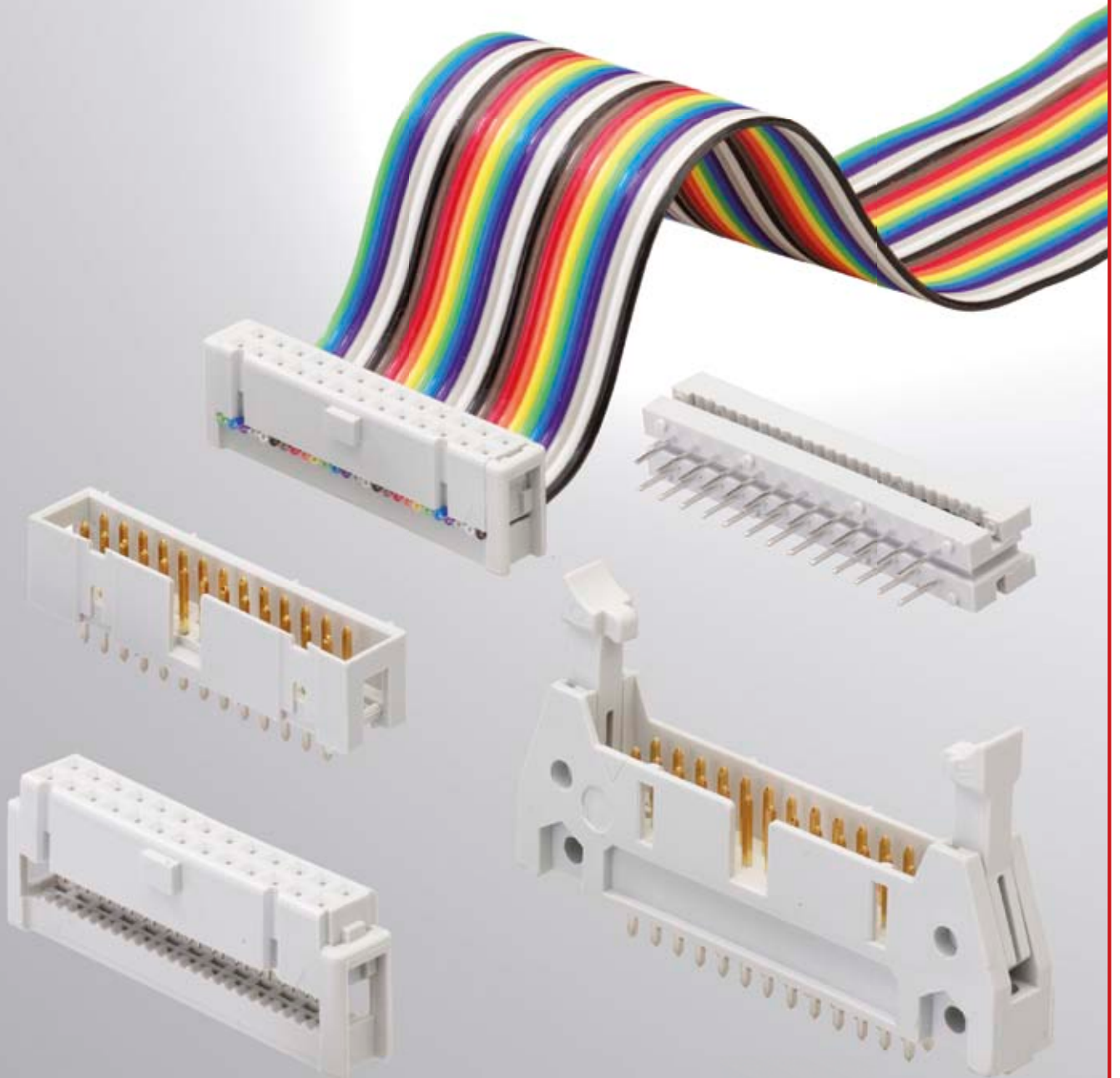


TABLE OF CONTENTS

SPEED Group Presentation	2
Pitch 2.54mm	
Female Header	3
Female Header, Strain Relief	4
Transition Connector, THT	5
Socket Connector, THT, 2.54 x 7.62mm	6
Socket Connector, THT, 2.54 x 15.24mm	7
Male Header, IDC Type	8
Box Header, IDC Type	9
Male Header, straight, THT	10
Male Header, angled, THT	11
Male Header, straight, SMD	12
Box Header, straight, THT	13
Box Header, angled, THT	14
Box Header, straight, SMD	15
Pitch 2.00mm	
Female Header	16
Transition Connector, THT	17
Male Header, straight, THT	18
Male Header, angled, THT	19
Male Header, straight, SMD	20
Box Header, straight, THT	21
Box Header, angled, THT	22
Box Header, straight, SMD	23
Pitch 1.27mm	
Female Header	24
Male Header, straight, THT	25
Male Header, angled, THT	26
Male Header, straight, SMD	27
Male Header, angled, SMD	28
Box Header, straight, THT	29
Box Header, angled, THT	30
Box Header, straight, SMD	31
Box Header, angled, SMD	32
Options	33
Cable Assemblies	34
SPEED Solutions	36





SPEED Group

...we solve your problems

From product-idea, through engineering and design, up to production, quality control and logistics

Product range of electronics and electromechanics:

- Telecommunication
- Refinement
- Complete solutions
- Assemblies
- Interface adaptation
- OEM solutions
- Cable assemblies
- SPEEDflex connectors
- Standard components
- SPEEDtest measurement equipment

Branches:

- Telecommunication
- Domestic systems
- Medical technology
- Automation
- Multimedia
- Industrial electronics
- Measurement + Control
- Energy industry

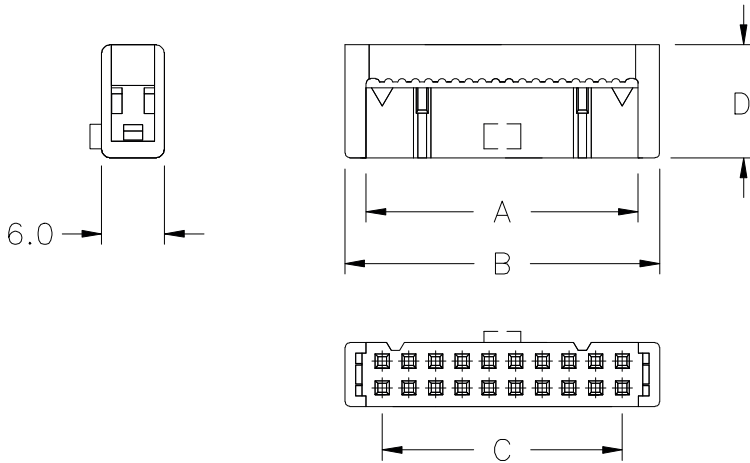
Delivery of certified products to 14 countries.

International presence with 7 companies in 6 countries.

SPEED: Reliability and competence from one source.

FEMALE HEADER

PITCH 2.54 x 2.54mm



No. of Contacts	A	B	C
06	7.38	12.12	5.08
08	10.18	14.66	7.62
10	12.68	17.20	10.16
14	17.78	22.30	15.24
16	20.28	24.85	17.78
20	25.38	29.90	22.86
26	32.98	37.55	30.48
34	43.18	47.70	40.64
40	50.78	55.30	48.26
50	63.48	68.00	60.96
60	76.18	80.70	73.66

Terminated height:
 D = 10.34 without strain relief
 D = 16.30 with strain relief

Specifications

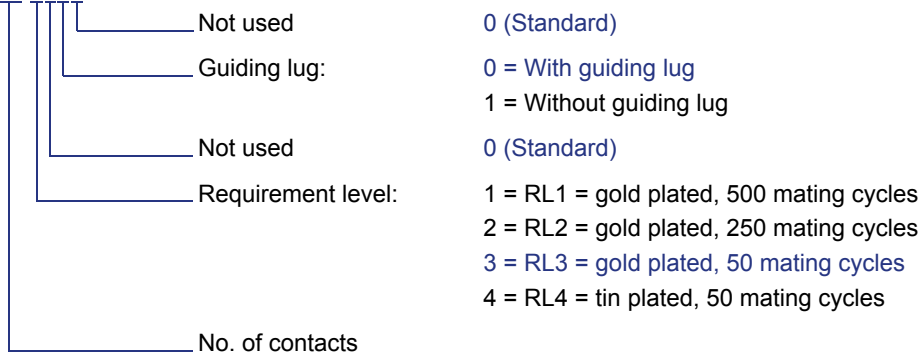
Material

Contacts: Phosphor Bronze
 Insulator: PBT, glass reinforced, UL94V-0

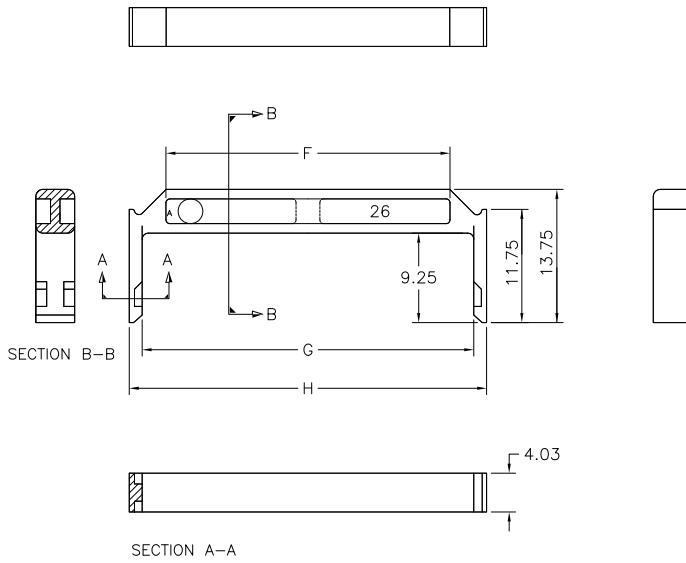
Electrical

Current Rating: 1.0A
 Contact Resistance: 20mOhm max.
 Insulation Resistance: 5000MOhm min.
 Withstanding Voltage: 1000V AC for 1 minute
 Operating Temperature: -40°C to +105°C

SPFHxx-3000



FEMALE HEADER, STRAIN RELIEF



No. of Contacts	F	G	H
10	9.50	14.50	14.20
14	14.60	19.60	22.30
16	17.15	22.15	24.82
20	22.15	27.20	29.90
26	29.85	34.85	37.55
34	40.00	45.00	47.68
40	47.60	52.60	55.30
50	60.30	65.30	68.00
60	73.00	78.00	80.70

Specifications

Material

Plastic

PBT, glass reinforced, UL94V-0

Electrical

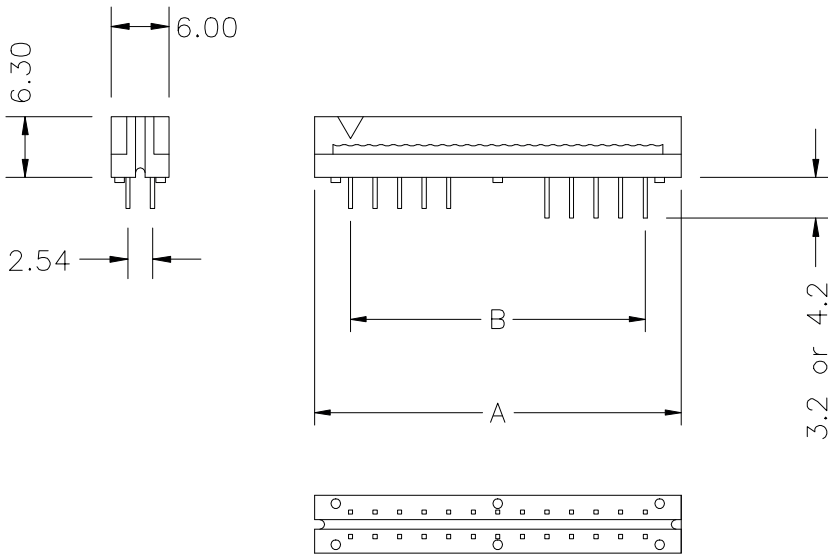
Operating Temperature:

-40°C to +105°C

SPFHxx-SR

_____ No. of contacts





No. of Contacts	A	B
10	17.60	10.16
14	22.60	15.24
16	25.20	17.78
20	30.30	22.86
26	37.90	30.48
34	48.00	40.64
40	55.70	48.26
50	68.40	60.96
60	81.10	73.66

Specifications

Material

Contacts: Phosphor Bronze
 Insulator: PBT, glass reinforced, UL94V-0

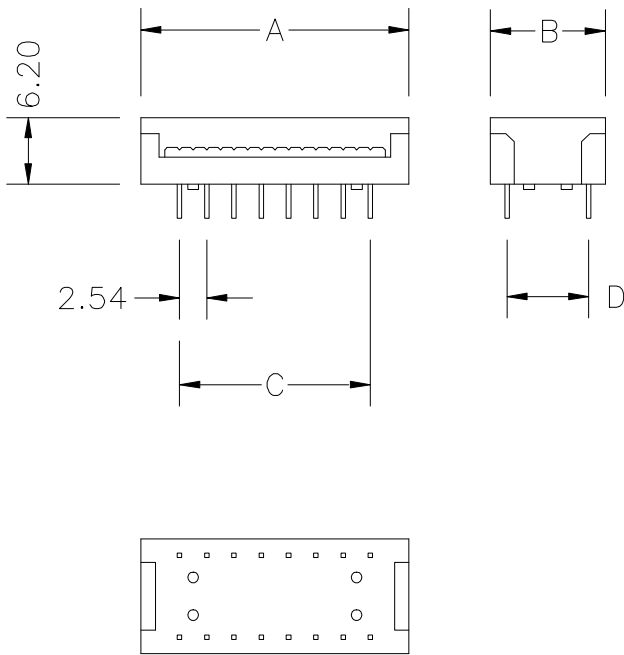
Electrical

Current Rating: 1.0A
 Contact Resistance: 20mOhm max.
 Insulation Resistance: 5000MOhm min.
 Withstanding Voltage: 1000V AC for 1 minute
 Operating Temperature: -40°C to +105°C

SPTCxx-4000

Not used: 0 (Standard)
 Pin length: 0 = 3.2mm (Standard)
 1 = 4.2mm
 Requirement level: 4 = RL4 = tin plated, 50 mating cycles
 No. of contacts:





No. of Contacts	A	B	C	D
8	14.82	10.70	7.62	7.62
10	17.98	10.70	10.16	7.62
14	22.44	10.70	15.24	7.62
16	24.98	10.70	17.78	7.62
18	28.14	10.70	20.32	7.62
20	30.68	10.70	22.86	7.62
24	35.76	10.70	27.94	7.62
26	38.30	10.70	30.48	7.62
28	40.84	10.70	33.02	7.62
34	48.46	10.70	40.64	7.62
40	56.08	10.70	48.26	7.62

Specifications

Material

Contacts: Phosphor Bronze
 Insulator: PBT, glass reinforced, UL94V-0

Electrical

Current Rating: 1.0A
 Contact Resistance: 20mOhm max.
 Insulation Resistance: 5000MOhm min.
 Withstanding Voltage: 1000V AC for 1 minute
 Operating Temperature: -40°C to +105°C

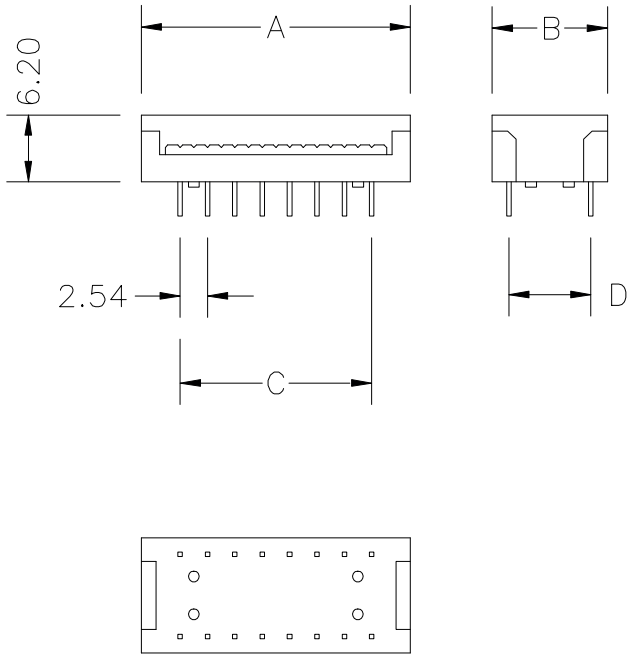
SPSCxx-4001

Style: 1 = Pitch 7.62mm (Standard)
 Not used: 0 (Standard)
 Pin length: 0 = 4.2mm (Standard)
 1 = 3.2mm
 Requirement level: 4 = RL4 = tin plated, 50 mating cycles
 No. of contacts



SOCKET CONNECTOR, THT

PITCH 2.54 x 15.24mm



No. of Contacts	A	B	C	D
24	35.14	18.30	27.94	15.24
26	38.30	18.30	30.48	15.24
28	40.84	18.30	33.02	15.24
32	45.92	18.30	38.10	15.24
34	48.46	18.30	40.64	15.24
36	51.00	18.30	43.18	15.24
40	55.46	18.30	48.26	15.24

Specifications

Material

Contacts: Phosphor Bronze
 Insulator: PBT, glass reinforced, UL94V-0

Electrical

Current Rating: 1.0A
 Contact Resistance: 20mOhm max.
 Insulation Resistance: 5000MOhm min.
 Withstanding Voltage: 1000V AC for 1 minute
 Operating Temperature: -40°C to +105°C

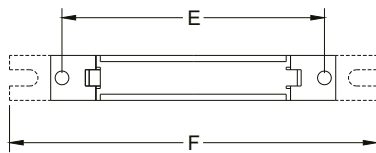
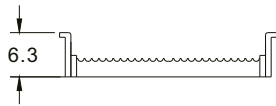
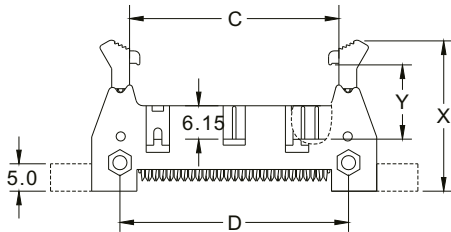
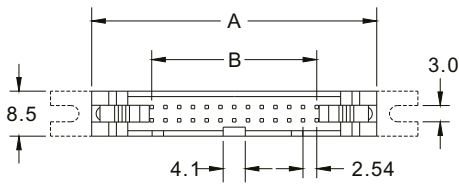
SPSCxx-4002

Style: 2 = Pitch 15.24mm (Standard)
 Not used: 0 (Standard)
 Pin length: 0 = 4.2mm (Standard)
 1 = 3.2mm
 Requirement level: 4 = RL4 = tin plated, 50 mating cycles
 No. of contacts



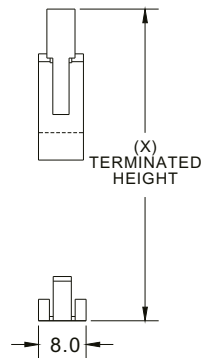
MALE HEADER, IDC TYPE

PITCH 2.54 x 2.54mm



No. of Contacts	A	B	C	D	E	F
10	31.98	10.16	17.94	21.83	27.92	47.18
14	37.06	15.24	23.02	26.91	33.00	52.26
16	39.60	17.75	25.56	29.45	35.54	54.80
20	44.68	22.86	30.64	34.53	40.62	59.88
24	49.76	27.94	35.72	39.61	45.70	64.96
26	52.30	30.48	38.26	42.15	48.24	67.50
30	57.38	35.56	43.34	47.23	53.32	72.58
34	62.46	40.64	48.42	52.31	58.40	77.66
40	70.08	48.26	56.04	59.93	66.02	85.28
50	82.78	60.96	68.74	72.63	78.72	97.98
60	95.48	73.66	81.44	85.33	91.42	110.68
64	100.56	78.74	86.52	90.41	96.50	115.76

Accessories	X	Y
Long Latch	29.2	14.6
Short Latch	25.6	10.6



Specifications

Material

Contacts: Brass
 Insulator: PBT, glass reinforced, UL94V-0

Electrical

Current Rating: 1.0A
 Contact Resistance: 30mOhm max.
 Insulation Resistance: 3000MOhm min.
 Withstanding Voltage: 500V AC for 1 minute
 Operating Temperature: -40°C to +105°C

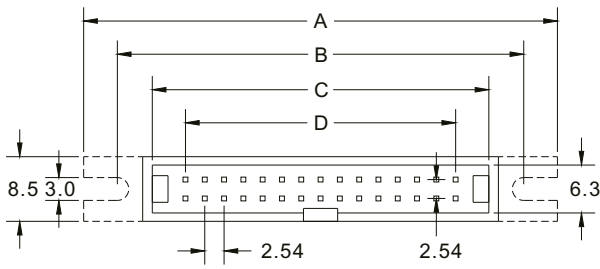
SPM_{ixx}-3000

- Not used: 0 (Standard)
- Latches: 0 = With short latches
1 = With long latches
- Flanges: 0 = Without flanges
1 = With flanges
- Requirement level: 1 = RL1 = gold plated, 500 mating cycles
2 = RL2 = gold plated, 250 mating cycles
3 = RL3 = gold plated, 50 mating cycles
4 = RL4 = tin plated, 50 mating cycles
- No. of contacts

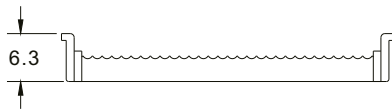
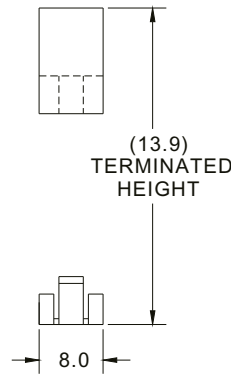
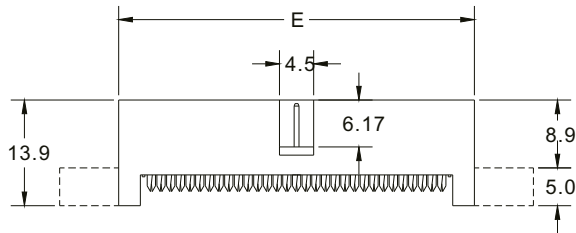


BOX HEADER, IDC TYPE

PITCH 2.54 x 2.54mm



No. of Contacts	A	B	C	D	E
10	36.96	28.60	18.30	10.16	21.42
14	42.04	33.68	23.38	15.24	26.50
16	44.58	36.22	25.92	17.78	29.04
20	49.66	41.30	31.00	22.86	34.12
24	54.74	46.38	36.08	27.94	39.20
26	57.28	48.92	38.62	30.48	41.74
30	62.36	54.00	43.70	35.56	46.82
34	67.44	59.08	48.78	40.64	51.90
40	75.06	66.70	56.40	48.26	59.52
50	87.76	79.40	69.10	60.96	72.22
60	100.46	92.10	81.80	73.66	84.92
64	105.54	97.18	86.88	78.74	90.00



Specifications

Material

Contacts: Brass
 Insulator: PBT, glass reinforced, UL94V-0

Electrical

Current Rating: 1.0A
 Contact Resistance: 30mOhm max.
 Insulation Resistance: 3000MOhm min.
 Withstanding Voltage: 500V AC for 1 minute
 Operating Temperature: -40°C to +105°C

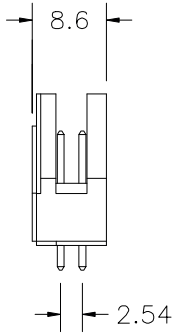
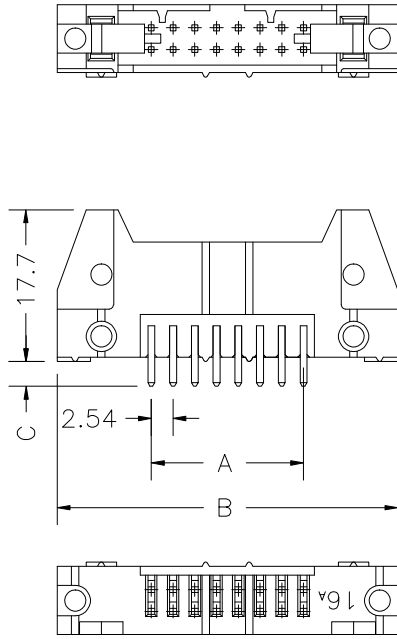
SPB1xx-3000

- Not used 0 (Standard)
- Flanges: 0 = Without flanges
1 = With flanges
- Requirement level: 1 = RL1 = gold plated, 500 mating cycles
2 = RL2 = gold plated, 250 mating cycles
3 = RL3 = gold plated, 50 mating cycles
4 = RL4 = tin plated, 50 mating cycles
- No. of contacts



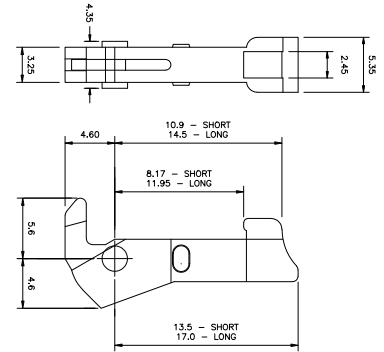
MALE HEADER, STRAIGHT, THT

PITCH 2.54 x 2.54mm



No. of Contacts	A	B
10	10.16	32.16
14	15.24	37.24
16	17.78	39.78
20	22.86	44.86
26	30.48	52.48
34	40.64	62.64
40	48.26	70.26
50	60.96	82.96
60	73.66	95.66

C = 2.9 or 4.5



Specifications

Material

Contacts: Phosphor Bronze
 Insulator: PBT, glass reinforced, UL94V-0

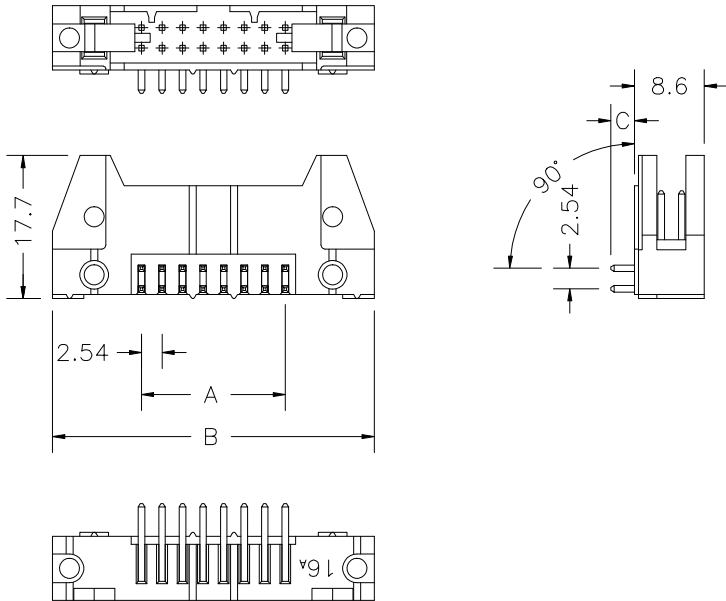
Electrical

Current Rating: 1.0A
 Contact Resistance: 20mOhm max.
 Insulation Resistance: 5000MOhm min.
 Withstanding Voltage: 1000V AC for 1 minute
 Operating Temperature: -40°C to +105°C

SPMHxxS-3000

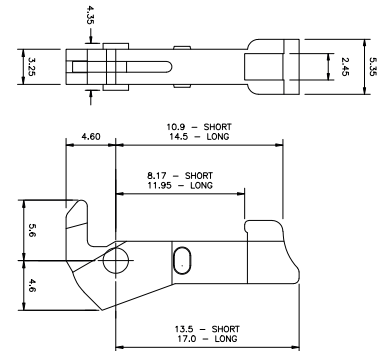
- Not used: 0 (Standard)
- Latches: 0 = Without latches
1 = With short latches
2 = With long latches
- Pin length: 0 = 2.9mm (Standard)
1 = 4.5mm
- Requirement level: 1 = RL1 = gold plated, 500 mating cycles
2 = RL2 = gold plated, 250 mating cycles
3 = RL3 = gold plated, 50 mating cycles
4 = RL4 = tin plated, 50 mating cycles
- Style: S = Straight
- No. of contacts





No. of Contacts	A	B
10	10.16	32.16
14	15.24	37.24
16	17.78	39.78
20	22.86	44.86
26	30.48	52.48
34	40.64	62.64
40	48.26	70.26
50	60.96	82.96
60	73.66	95.66

C = 2.9 or 4.5



Specifications

Material

Contacts: Phosphor Bronze
 Insulator: PBT, glass reinforced, UL94V-0

Electrical

Current Rating: 1.0A
 Contact Resistance: 20mOhm max.
 Insulation Resistance: 5000MOhm min.
 Withstanding Voltage: 1000V AC for 1 minute
 Operating Temperature: -40°C to +105°C

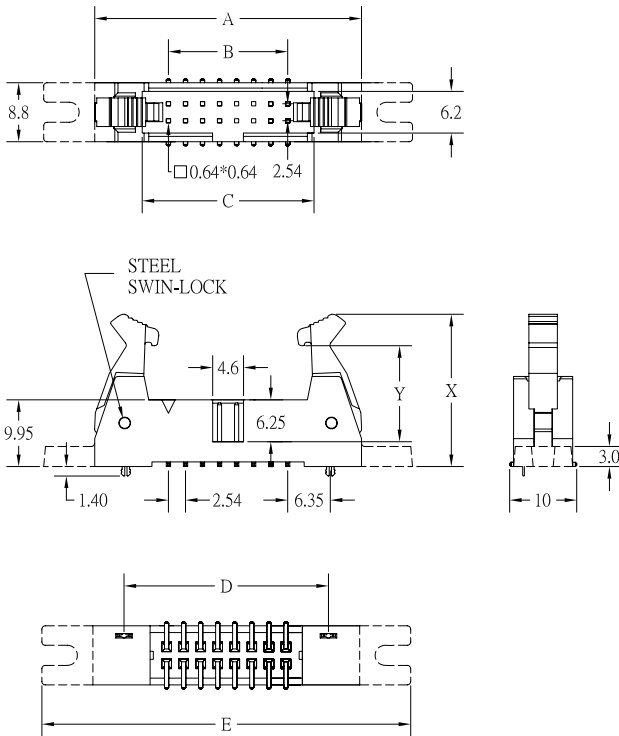
SPMHxxA-3000

- Not used: 0 (Standard)
- Latches: 0 = Without latches
1 = With short latches
2 = With long latches
- Pin length: 0 = 2.9mm (Standard)
1 = 4.5mm
- Requirement level: 1 = RL1 = gold plated, 500 mating cycles
2 = RL2 = gold plated, 250 mating cycles
3 = RL3 = gold plated, 50 mating cycles
4 = RL4 = tin plated, 50 mating cycles
- Style: A = Angled
- No. of contacts



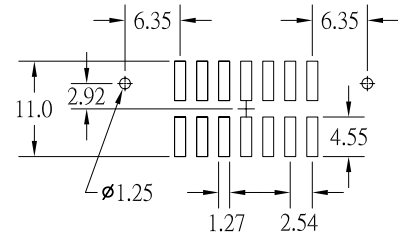
MALE HEADER, STRAIGHT, SMD

PITCH 2.54 x 2.54mm



No. of Contacts	A	B	C	D	E
6	27.07	5.08	12.92	17.78	42.27
8	29.61	7.62	15.46	20.32	44.81
10	32.15	10.16	18.00	22.86	47.35
12	34.69	12.70	20.54	25.40	49.89
14	37.23	15.24	23.05	27.94	52.43
16	39.77	17.78	25.62	30.48	54.97
20	44.85	22.86	30.70	35.56	60.05
24	49.93	27.94	35.78	40.64	65.13
26	52.47	30.48	38.32	43.18	67.67
30	57.55	35.56	43.40	48.26	72.75
34	62.63	40.64	48.48	53.34	77.83
40	70.25	48.26	56.10	60.96	85.45
44	75.33	53.34	61.18	66.04	90.53
50	82.95	60.96	68.80	73.66	98.15
60	95.65	73.66	81.50	86.36	110.85
64	100.73	78.74	86.58	91.44	115.93

Accessories	X	Y
Long Latch	22.7	14.3
Short Latch	21.2	10.6



Recommended P.C.B. Layout

Specifications

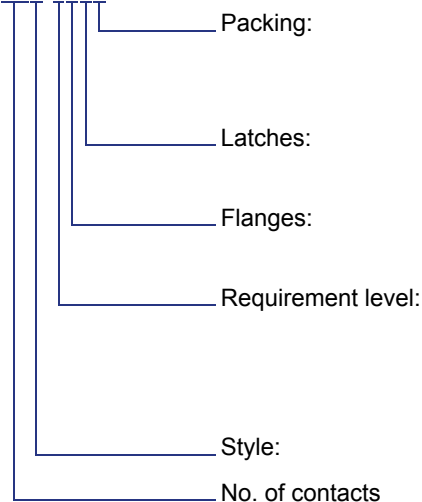
Material

Contacts: Brass
 Insulator: LCP, glass reinforced, UL94V-0

Electrical

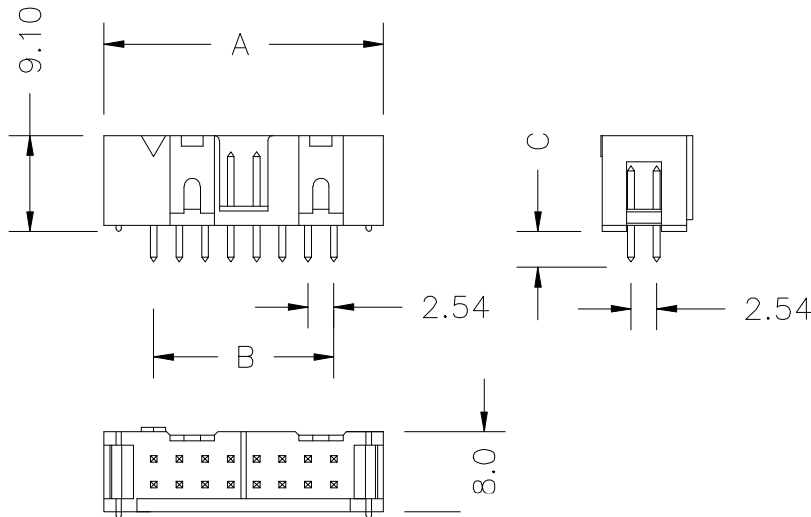
Current Rating: 1.0A
 Contact Resistance: 30mOhm max.
 Insulation Resistance: 3000MOhm min.
 Withstanding Voltage: 500V AC for 1 minute
 Operating Temperature: -40°C to +105°C

SPMHSMDxxS-3010



- 0 = Tube with pad
- 1 = Tube without pad
- 2 = Tape & Reel with pad
- 1 = With short latches (Standard)
- 2 = With long latches
- 0 = Without flanges
- 1 = With flanges
- 1 = RL1 = gold plated, 500 mating cycles
- 2 = RL2 = gold plated, 250 mating cycles
- 3 = RL3 = gold plated, 50 mating cycles
- 4 = RL4 = tin plated, 50 mating cycles
- S = Straight





No. of Contacts	A	B
10	10.16	19.56
14	15.24	24.64
16	17.78	27.18
20	22.86	32.26
26	30.48	39.88
34	40.64	50.04
40	48.26	57.66
50	60.96	70.36

C = 2.90 or 4.50

Specifications

Material

Contacts: Phosphor Bronze
 Insulator: PBT, glass reinforced, UL94V-0

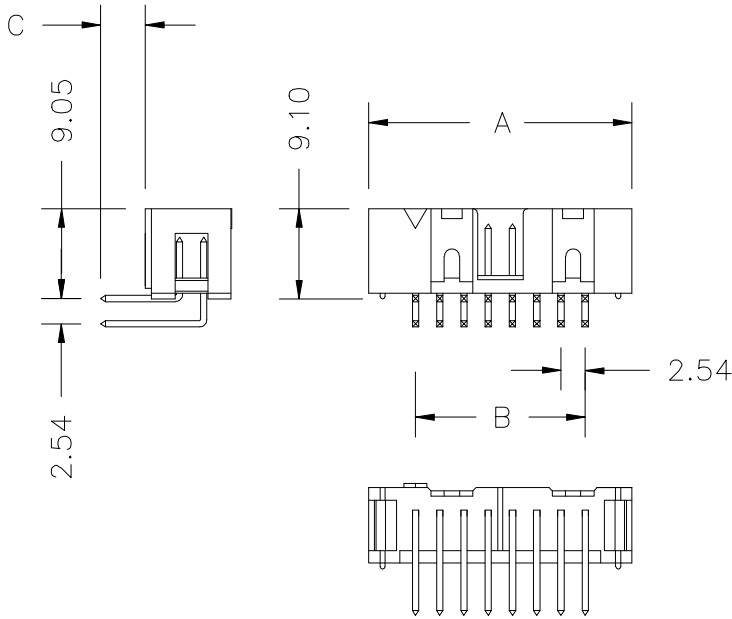
Electrical

Current Rating: 1.0A
 Contact Resistance: 20mOhm max.
 Insulation Resistance: 5000MOhm min.
 Withstanding Voltage: 1000V AC for 1 minute
 Operating Temperature: -40°C to +105°C

SPBHxxS-3000

- Packing: 0 = Sheet (Standard)
 T = Tube
 Y = Tray
- Not used: 0 (Standard)
- Pin length: 0 = 2.9mm (Standard)
 1 = 4.5mm
- Requirement level: 1 = RL1 = gold plated, 500 mating cycles
 2 = RL2 = gold plated, 250 mating cycles
 3 = RL3 = gold plated, 50 mating cycles
 4 = RL4 = tin plated, 50 mating cycles
- Style: S = Straight
- No. of contacts





No. of Contacts	A	B
10	10.16	19.56
14	15.24	24.64
16	17.78	27.18
20	22.86	32.26
26	30.48	39.88
34	40.64	50.04
40	48.26	57.66
50	60.96	70.36

C = 2.90 or 4.50

Specifications

Material

Contacts: Phosphor Bronze
 Insulator: PBT, glass reinforced, UL94V-0

Electrical

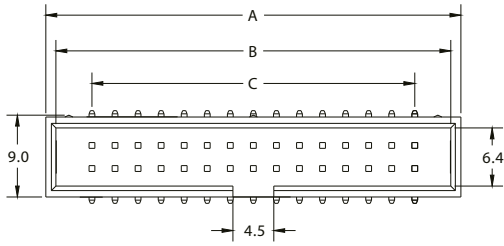
Current Rating: 1.0A
 Contact Resistance: 20mOhm max.
 Insulation Resistance: 5000MOhm min.
 Withstanding Voltage: 1000V AC for 1 minute
 Operating Temperature: -40°C to +105°C

SPBHxxA-3000

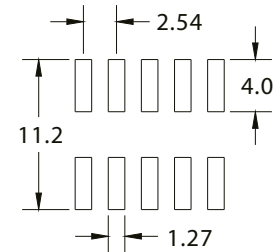
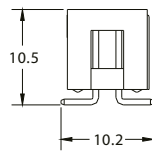
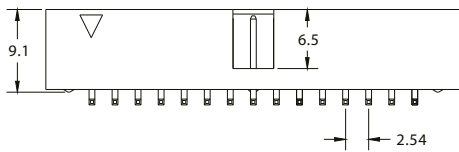


BOX HEADER, STRAIGHT, SMD

PITCH 2.54 x 2.54mm



No. of Contacts	A	B	C
6	15.24	13.02	5.08
8	17.78	15.56	7.62
10	20.32	18.10	10.16
12	22.86	20.64	12.70
14	25.40	23.18	15.24
16	27.94	25.72	17.78
20	33.02	30.80	22.86
24	38.10	35.88	27.94
26	40.64	38.42	30.48
30	45.72	43.50	35.56
34	50.80	48.58	40.64
40	58.42	56.20	48.26
44	63.50	61.28	53.34
50	71.12	68.90	60.96
60	83.82	81.60	73.66
64	88.90	86.88	78.74



Recommended P.C.B. Layout

Specifications

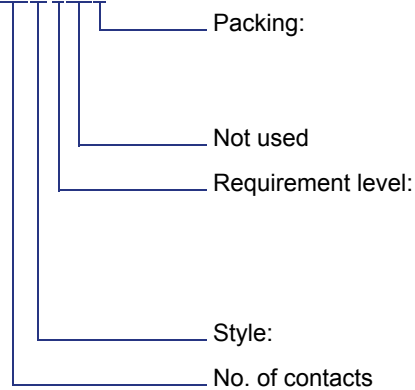
Material

Contacts: Brass
 Insulator: LCP, glass reinforced, UL94V-0

Electrical

Current Rating: 2.0A
 Contact Resistance: 30mOhm max.
 Insulation Resistance: 3000MOhm min.
 Withstanding Voltage: 500V AC for 1 minute
 Operating Temperature: -40°C to +105°C

SPBHSMdxS-3000

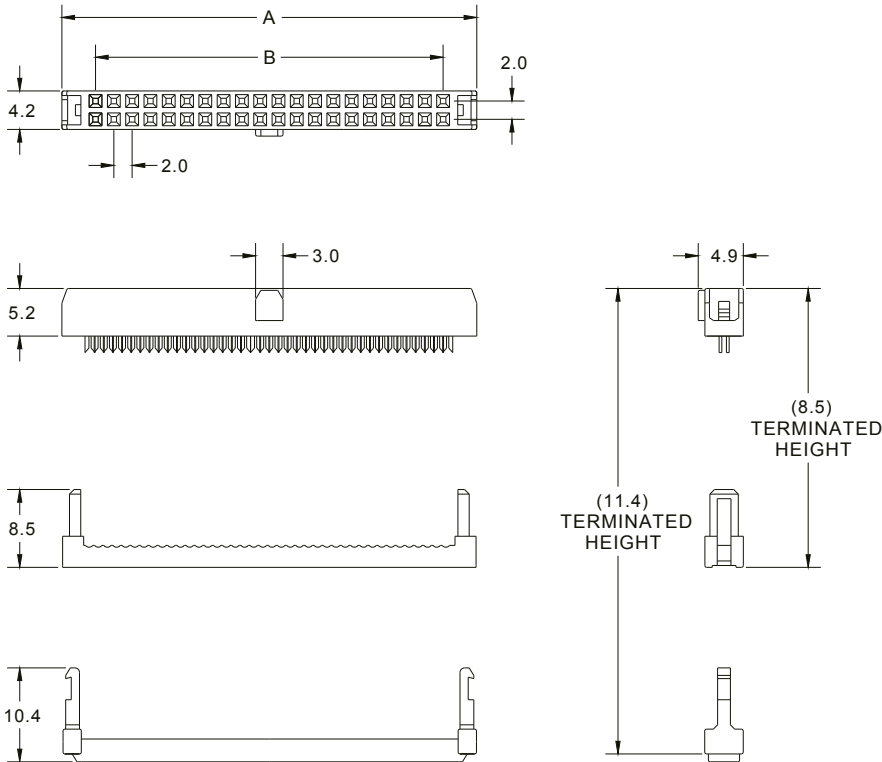


- 0 = Tube with pad
- 1 = Tube without pad
- 2 = Tape & Reel with pad
- 0 (Standard)
- 1 = RL1 = gold plated, 500 mating cycles
- 2 = RL2 = gold plated, 250 mating cycles
- 3 = RL3 = gold plated, 50 mating cycles
- 4 = RL4 = tin plated, 50 mating cycles
- S = Straight



FEMALE HEADER

PITCH 2.00 x 2.00mm



No. of Contacts	A	B
6	11.2	4.0
8	13.2	6.0
10	15.2	8.0
12	17.2	10.0
14	19.2	12.0
16	21.2	14.0
18	23.2	16.0
20	25.2	18.0
22	27.2	20.0
24	29.2	22.0
26	31.2	24.0
30	35.2	28.0
32	37.2	30.0
34	39.2	32.0
36	41.2	34.0
38	43.2	36.0
40	45.2	38.0
44	49.2	42.0
48	53.2	46.0
50	55.2	48.0
56	61.2	54.0
60	65.2	58.0
64	69.2	62.0
68	73.2	66.0

Specifications

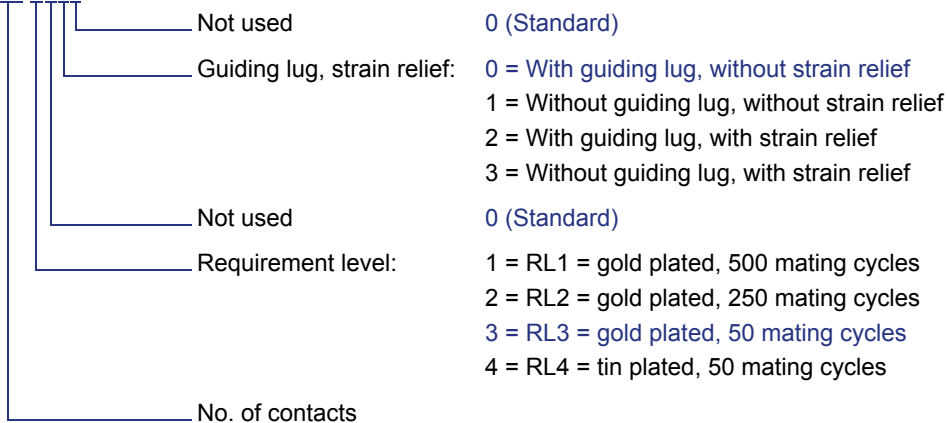
Material

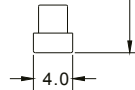
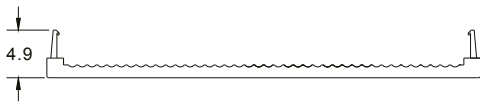
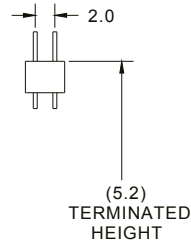
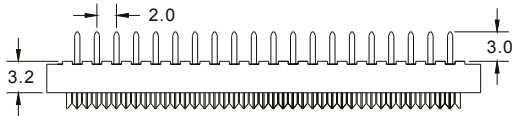
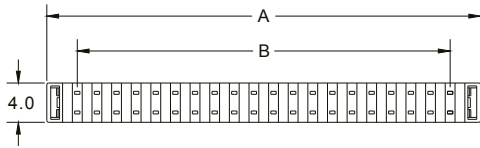
Contacts: Phosphor Bronze
 Insulator: PBT, glass reinforced, UL94V-0

Electrical

Current Rating: 1.0A
 Contact Resistance: 30mOhm max.
 Insulation Resistance: 3000MOhm min.
 Withstanding Voltage: 500C AC for 1 minute
 Operating Temperature: -40°C to +105°C

SP200FHxx-3000





No. of Contacts	A	B
8	12.20	6.00
10	14.20	8.00
12	16.20	10.00
14	18.20	12.00
16	20.20	14.00
20	24.20	18.00
22	26.20	20.00
24	28.20	22.00
26	30.20	24.00
30	34.20	28.00
34	38.20	32.00
40	44.20	38.00
44	48.20	42.00
50	54.20	48.00
68	72.20	66.00

Specifications

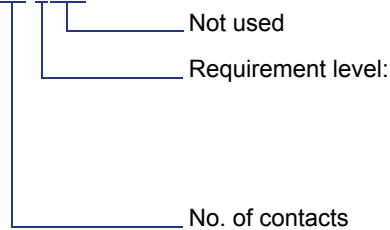
Material

Contacts: Phosphor Bronze
 Insulator: PBT, glass reinforced, UL94V-0

Electrical

Current Rating: 1.0A
 Contact Resistance: 30mOhm max.
 Insulation Resistance: 3000MOhm min.
 Withstanding Voltage: 500V AC for 1 minute
 Operating Temperature: -40°C to +105°C

SP200TCxx-4000



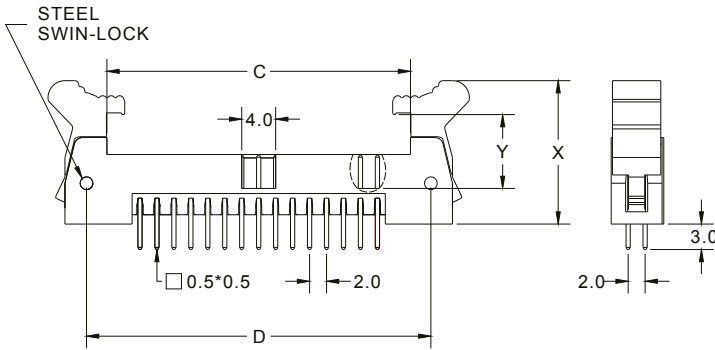
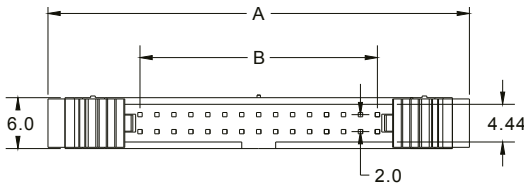
0 (Standard)

- 1 = RL1 = gold plated, 500 mating cycles
- 2 = RL2 = gold plated, 250 mating cycles
- 3 = RL3 = gold plated, 50 mating cycles
- 4 = RL4 = tin plated, 50 mating cycles



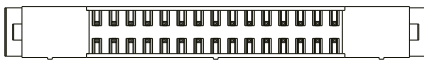
MALE HEADER, STRAIGHT, THT

PITCH 2.00 x 2.00mm



No. of Contacts	A	B	C	D
6	25.7	4.0	11.8	16.6
8	27.7	6.0	13.8	18.6
10	29.7	8.0	15.8	20.6
12	31.7	10.0	17.8	22.6
14	33.7	12.0	19.8	24.6
16	35.7	14.0	21.8	26.6
20	39.7	18.0	25.8	30.6
22	41.7	20.0	27.8	32.6
24	43.7	22.0	29.8	34.6
26	45.7	24.0	31.8	36.6
30	49.7	28.0	35.8	40.6
34	53.7	32.0	39.8	44.6
40	59.7	38.0	45.8	50.6
44	63.7	42.0	49.8	54.6
50	69.7	48.0	55.8	60.6
68	87.7	66.0	73.8	78.6

Accessories	X	Y
Long Latch	19.9	11.4
Short Latch	16.9	8.7



Specifications

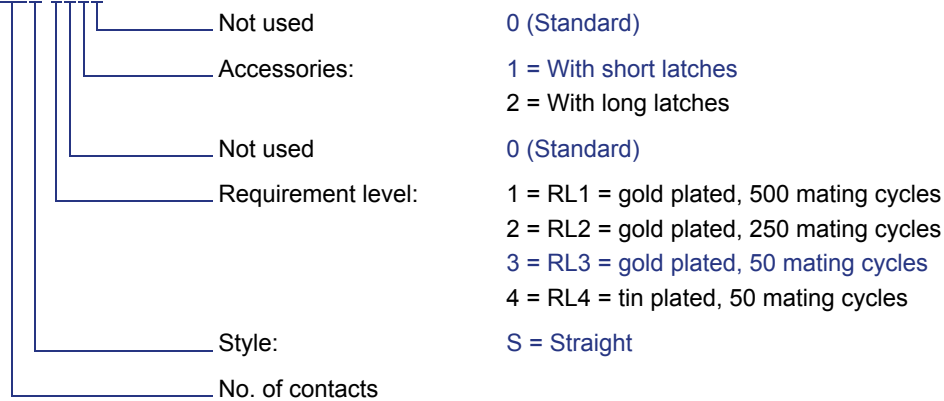
Material

Contacts: Brass
 Insulator: Nylon 66, glass reinforced, UL94V-0

Electrical

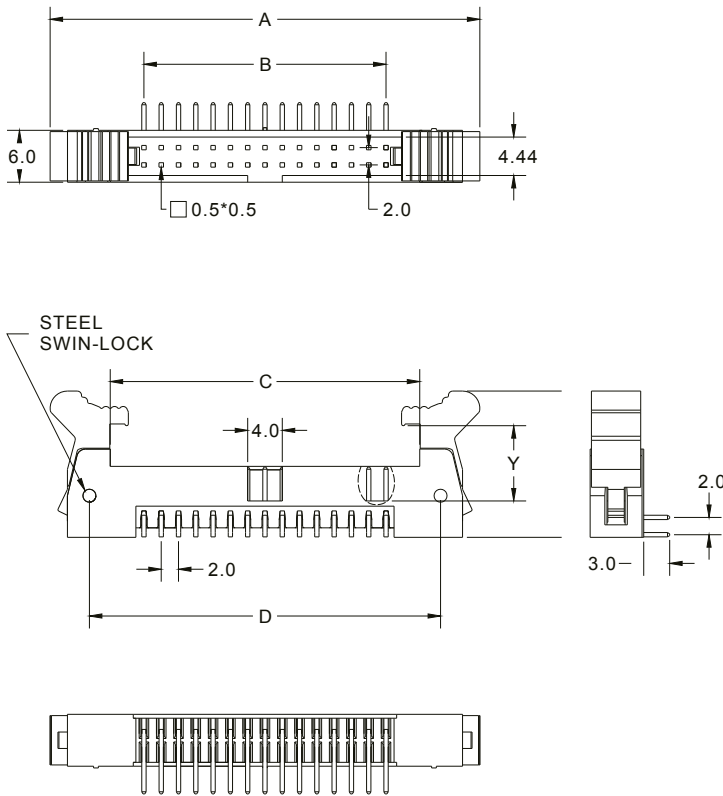
Current Rating: 1.0A
 Contact Resistance: 30mOhm max.
 Insulation Resistance: 3000MOhm min.
 Withstanding Voltage: 500V AC for 1 minute
 Operating Temperature: -40°C to +105°C

SP200MHxxS-3010



MALE HEADER, ANGLED, THT

PITCH 2.00 x 2.00mm



No. of Contacts	A	B	C	D
6	25.7	4.0	11.8	16.6
8	27.7	6.0	13.8	18.6
10	29.7	8.0	15.8	20.6
12	31.7	10.0	17.8	22.6
14	33.7	12.0	19.8	24.6
16	35.7	14.0	21.8	26.6
20	39.7	18.0	25.8	30.6
22	41.7	20.0	27.8	32.6
24	43.7	22.0	29.8	34.6
26	45.7	24.0	31.8	36.6
30	49.7	28.0	35.8	40.6
34	53.7	32.0	39.8	44.6
40	59.7	38.0	45.8	50.6
44	63.7	42.0	49.8	54.6
50	69.7	48.0	55.8	60.6
68	87.7	66.0	73.8	78.6

Accessories	X	Y
Long Latch	19.9	11.4
Short Latch	16.9	8.7

Specifications

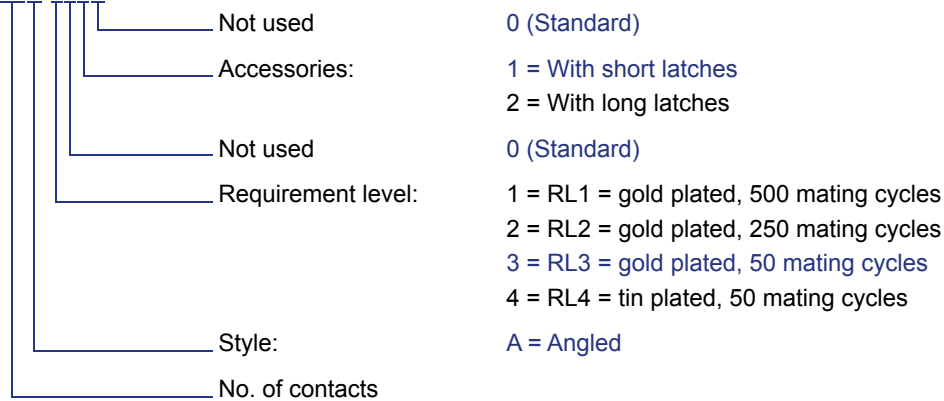
Material

Contacts: Brass
 Insulator: Nylon 66, glass reinforced, UL94V-0

Electrical

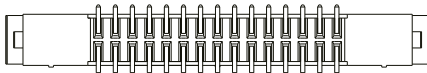
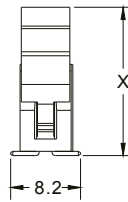
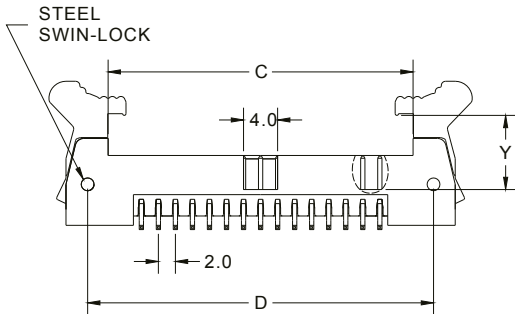
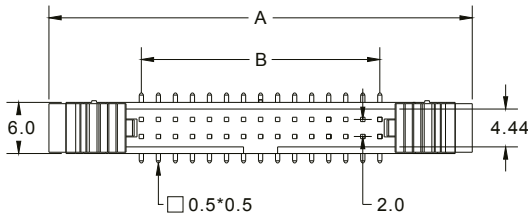
Current Rating: 1.0A
 Contact Resistance: 30mOhm max.
 Insulation Resistance: 3000MOhm min.
 Withstanding Voltage: 500V AC for 1 minute
 Operating Temperature: -40°C to +105°C

SP200MHxxA-3010



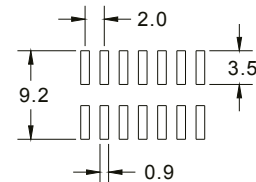
MALE HEADER, STRAIGHT, SMD

PITCH 2.00 x 2.00mm



No. of Contacts	A	B	C	D
6	25.7	4.0	11.8	16.6
8	27.7	6.0	13.8	18.6
10	29.7	8.0	15.8	20.6
12	31.7	10.0	17.8	22.6
14	33.7	12.0	19.8	24.6
16	35.7	14.0	21.8	26.6
20	39.7	18.0	25.8	30.6
22	41.7	20.0	27.8	32.6
24	43.7	22.0	29.8	34.6
26	45.7	24.0	31.8	36.6
30	49.7	28.0	35.8	40.6
34	53.7	32.0	39.8	44.6
40	59.7	38.0	45.8	50.6
44	63.7	42.0	49.8	54.6
50	69.7	48.0	55.8	60.6
68	87.7	66.0	73.8	78.6

Accessories	X	Y
Long Latch	20.4	11.4
Short Latch	17.4	8.7



Recommended P.C.B. Layout

Specifications

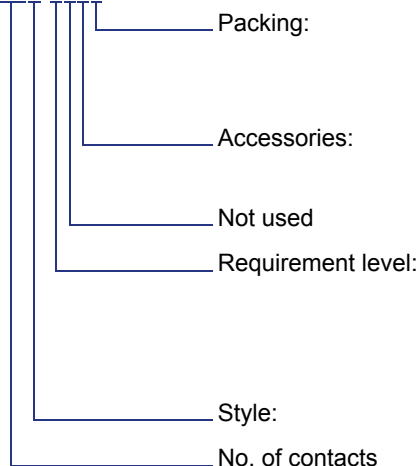
Material

Contacts: Brass
 Insulator: LCP, glass reinforced, UL94V-0

Electrical

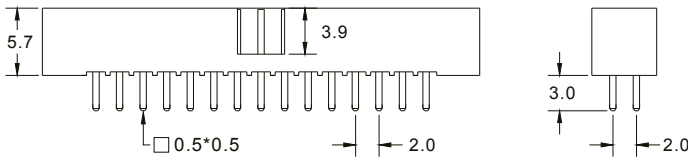
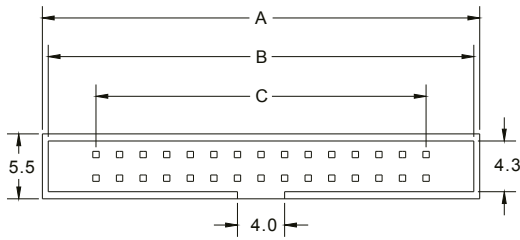
Current Rating: 1.0A
 Contact Resistance: 30mOhm max.
 Insulation Resistance: 3000MOhm min.
 Withstanding Voltage: 500V AC for 1 minute
 Operating Temperature: -40°C to +105°C

SP200MHSMDxxS-3010



- 0 = Tube with pad
- 1 = Tube without pad
- 2 = Tape & Reel with pad
- 1 = With short latches
- 2 = With long latches
- 0 (Standard)
- 1 = RL1 = gold plated, 500 mating cycles
- 2 = RL2 = gold plated, 250 mating cycles
- 3 = RL3 = gold plated, 50 mating cycles
- 4 = RL4 = tin plated, 50 mating cycles
- S = Straight





No. of Contacts	A	B	C
6	13.10	12.10	4.00
8	15.10	14.10	6.00
10	17.10	16.10	8.00
12	19.10	18.10	10.00
14	21.10	20.10	12.00
16	23.10	22.10	14.00
20	27.10	26.10	18.00
22	29.10	28.10	20.00
24	31.10	30.10	22.00
26	33.10	32.10	24.00
30	37.10	36.10	28.00
34	41.10	40.10	32.00
36	43.10	42.10	34.00
40	47.10	46.10	38.00
44	51.10	50.10	42.00
50	57.10	56.10	48.00
68	75.10	74.10	66.00

Specifications

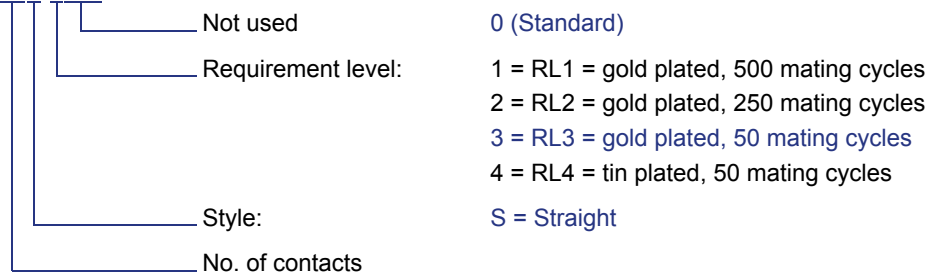
Material

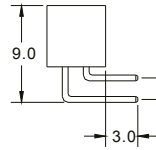
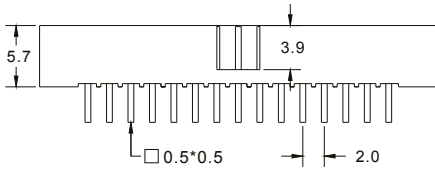
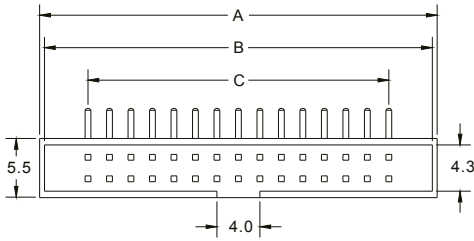
Contacts: Brass
 Insulator: LCP, glass reinforced, UL94V-0

Electrical

Current Rating: 1.0A
 Contact Resistance: 30mOhm max.
 Insulation Resistance: 3000MOhm min.
 Withstanding Voltage: 500V AC for 1 minute
 Operating Temperature: -40°C to +105°C

SP200BHxxS-3000





No. of Contacts	A	B	C
6	13.10	12.10	4.00
8	15.10	14.10	6.00
10	17.10	16.10	8.00
12	19.10	18.10	10.00
14	21.10	20.10	12.00
16	23.10	22.10	14.00
20	27.10	26.10	18.00
22	29.10	28.10	20.00
24	31.10	30.10	22.00
26	33.10	32.10	24.00
30	37.10	36.10	28.00
34	41.10	40.10	32.00
36	43.10	42.10	34.00
40	47.10	46.10	38.00
44	51.10	50.10	42.00
50	57.10	56.10	48.00
68	75.10	74.10	66.00

Specifications

Material

Contacts: Brass
 Insulator: LCP, glass reinforced, UL94V-0

Electrical

Current Rating: 1.0A
 Contact Resistance: 30mOhm max.
 Insulation Resistance: 3000MOhm min.
 Withstanding Voltage: 500V AC for 1 minute
 Operating Temperature: -40°C to +105°C

SP200BHxxA-3000

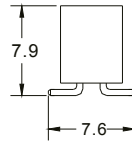
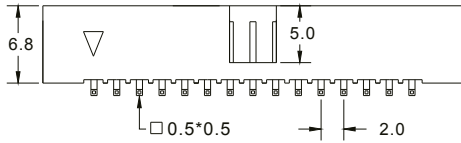
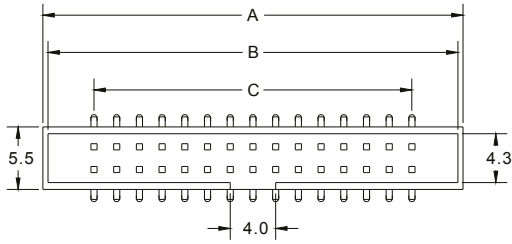
Not used
 Requirement level:
 Style:
 No. of contacts

0 (Standard)
 1 = RL1 = gold plated, 500 mating cycles
 2 = RL2 = gold plated, 250 mating cycles
 3 = RL3 = gold plated, 50 mating cycles
 4 = RL4 = tin plated, 50 mating cycles
 A = Angled

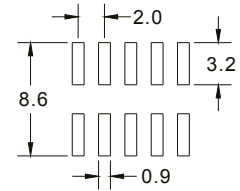


BOX HEADER, STRAIGHT, SMD

PITCH 2.00 x 2.00mm



No. of Contacts	A	B	C
6	13.10	12.10	4.00
8	15.10	14.10	6.00
10	17.10	16.10	8.00
12	19.10	18.10	10.00
14	21.10	20.10	12.00
16	23.10	22.10	14.00
20	27.10	26.10	18.00
22	29.10	28.10	20.00
24	31.10	30.10	22.00
26	33.10	32.10	24.00
30	37.10	36.10	28.00
34	41.10	40.10	32.00
36	43.10	42.10	34.00
40	47.10	46.10	38.00
44	51.10	50.10	42.00
50	57.10	56.10	48.00
68	75.10	74.10	66.00



Recommended P.C.B. Layout

Specifications

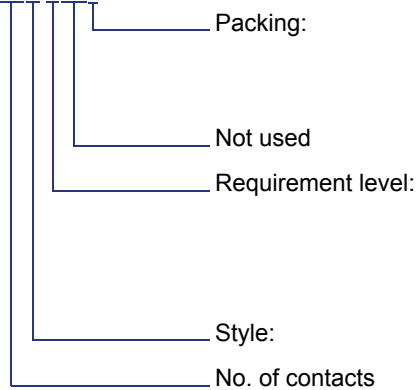
Material

Contacts: Brass
 Insulator: LCP, glass reinforced, UL94V-0

Electrical

Current Rating: 1.0A
 Contact Resistance: 30mOhm max.
 Insulation Resistance: 3000MOhm min.
 Withstanding Voltage: 500V AC for 1 minute
 Operating Temperature: -40°C to +105°C

SP200BHSMDxxS-3000

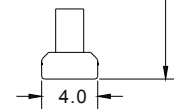
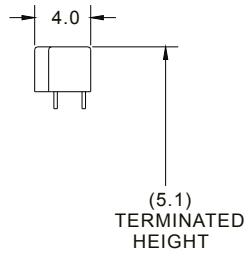
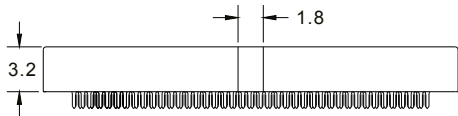
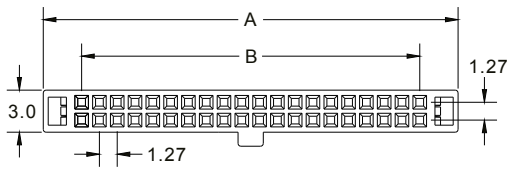


- 0 = Tube with pad
- 1 = Tube without pad
- 2 = Tape & Reel with pad
- 0 (Standard)
 - 1 = RL1 = gold plated, 500 mating cycles
 - 2 = RL2 = gold plated, 250 mating cycles
 - 3 = RL3 = gold plated, 50 mating cycles
 - 4 = RL4 = tin plated, 50 mating cycles
- S = Straight



FEMALE HEADER

PITCH 1.27 x 1.27mm



No. of Contacts	A	B
6	8.01	2.54
8	9.28	3.81
10	10.55	5.08
12	11.82	6.35
14	13.09	7.62
16	14.36	8.89
20	16.90	11.43
22	18.17	12.70
26	20.71	15.24
30	23.25	17.78
34	25.79	20.32
40	29.60	24.13
44	32.14	26.67
50	35.95	30.48
60	42.30	36.83
68	47.38	41.91
80	55.00	49.53

Specifications

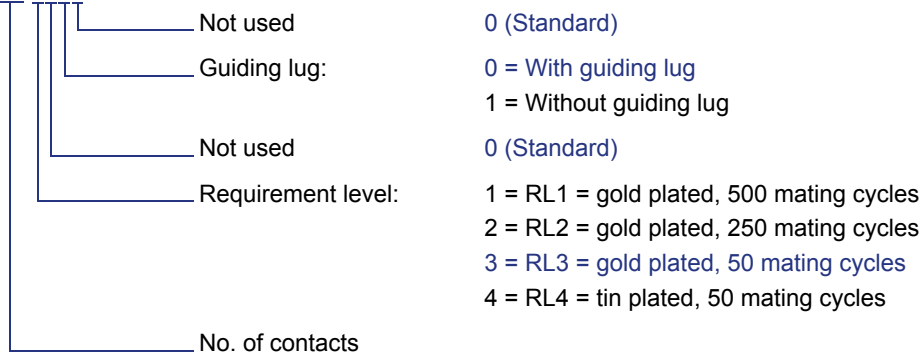
Material

Contacts: Phosphor Bronze
 Insulator: PBT, glass reinforced, UL94V-0

Electrical

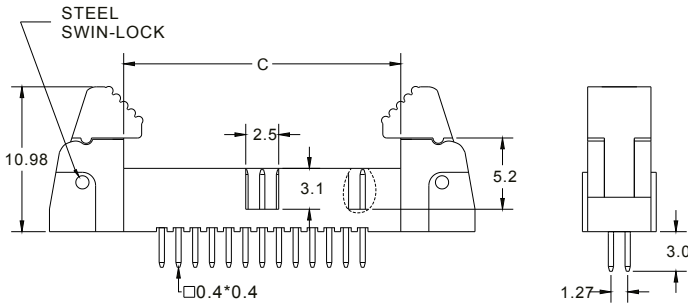
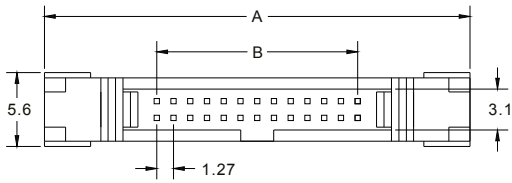
Current Rating: 1.0A
 Contact Resistance: 30mOhm max.
 Insulation Resistance: 1000MOhm min.
 Withstanding Voltage: 250V AC for 1 minute
 Operating Temperature: -40°C to +105°C

SP127FHxx-3000



MALE HEADER, STRAIGHT, THT

PITCH 1.27 x 1.27mm



No. of Contacts	A	B	C
6	19.58	2.54	8.32
8	20.85	3.81	9.59
10	22.12	5.08	10.86
12	23.39	6.35	12.13
14	24.66	7.62	13.40
16	25.93	8.89	14.67
20	28.47	11.43	17.21
22	29.74	12.70	18.48
24	31.01	13.97	19.75
26	32.28	15.24	21.02
30	34.82	17.78	23.56
34	37.36	20.32	26.10
40	41.17	24.13	29.91
44	43.71	26.67	32.45
50	47.52	30.48	36.26
60	53.87	36.83	42.61
68	58.95	41.91	47.69
80	66.57	49.53	55.31

Specifications

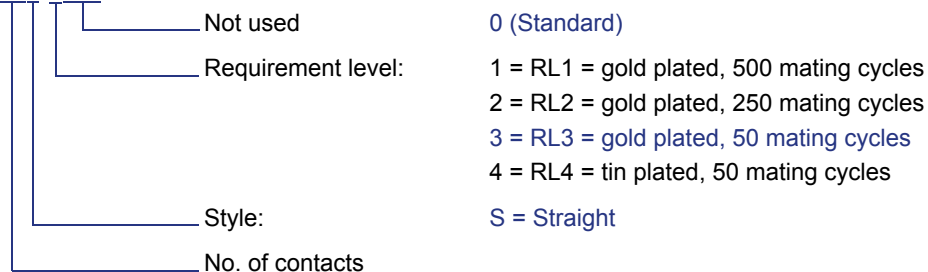
Material

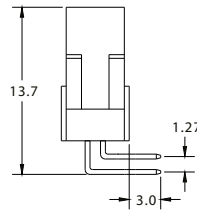
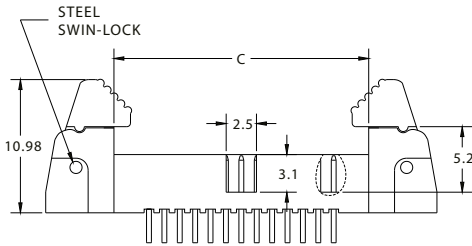
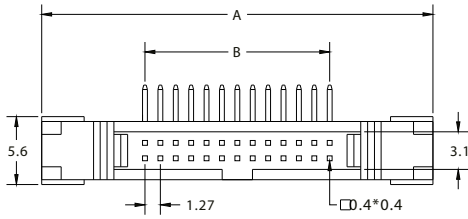
Contacts: Phosphor Bronze
 Insulator: LCP, glass reinforced, UL94V-0

Electrical

Current Rating: 1.0A
 Contact Resistance: 30mOhm max.
 Insulation Resistance: 1000MOhm min.
 Withstanding Voltage: 250V AC for 1 minute
 Operating Temperature: -40°C to +105°C

SP127MHxxS-3000





No. of Contacts	A	B	C
6	19.58	2.54	8.32
8	20.85	3.81	9.59
10	22.12	5.08	10.86
12	23.39	6.35	12.13
14	24.66	7.62	13.40
16	25.93	8.89	14.67
20	28.47	11.43	17.21
22	29.74	12.70	18.48
24	31.01	13.97	19.75
26	32.28	15.24	21.02
30	34.82	17.78	23.56
34	37.36	20.32	26.10
40	41.17	24.13	29.91
44	43.71	26.67	32.45
50	47.52	30.48	36.26
60	53.87	36.83	42.61
68	58.95	41.91	47.69
80	66.57	49.53	55.31

Specifications

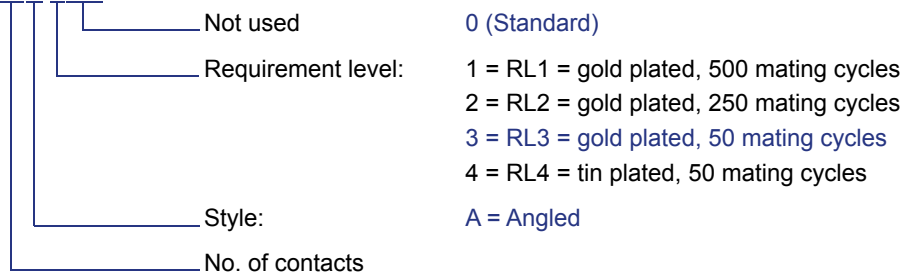
Material

Contacts: Phosphor Bronze
 Insulator: LCP, glass reinforced, UL94V-0

Electrical

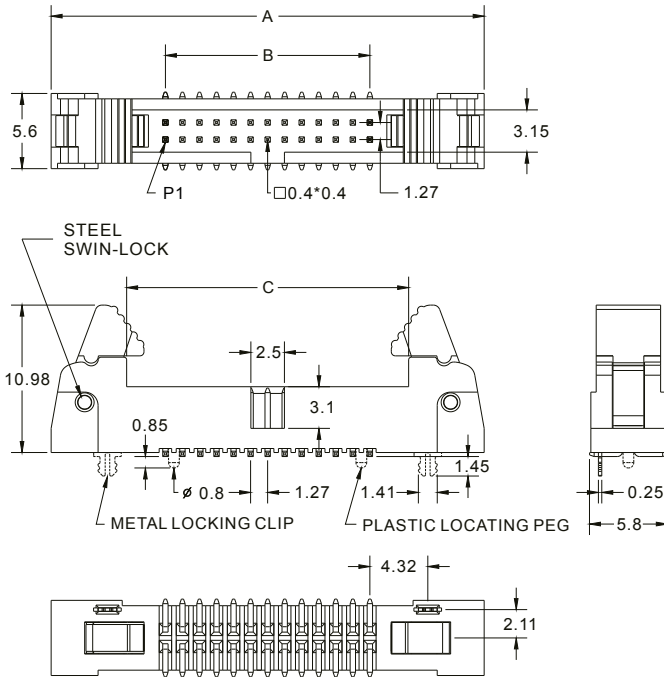
Current Rating: 1.0A
 Contact Resistance: 30mOhm max.
 Insulation Resistance: 1000MOhm min.
 Withstanding Voltage: 250V AC for 1 minute
 Operating Temperature: -40°C to +105°C

SP127MHxxA-3000

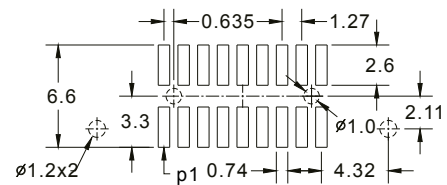


MALE HEADER, STRAIGHT, SMD

PITCH 1.27 x 1.27mm



No. of Contacts	A	B	C
6	19.58	2.54	8.32
8	20.85	3.81	9.59
10	22.12	5.08	10.86
12	23.39	6.35	12.13
14	24.66	7.62	13.40
16	25.93	8.89	14.67
20	28.47	11.43	17.21
22	29.74	12.70	18.48
24	31.01	13.97	19.75
26	32.28	15.24	21.02
30	34.82	17.78	23.56
34	37.36	20.32	26.10
40	41.17	24.13	29.91
44	43.71	26.67	32.45
50	47.52	30.48	36.26
60	53.87	36.83	42.61
68	58.95	41.91	47.69
80	66.57	49.53	55.31



Recommended P.C.B. Layout

Specifications

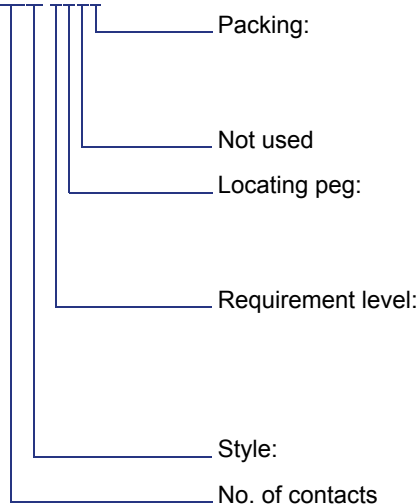
Material

Contacts: Phosphor Bronze
 Insulator: LCP, glass reinforced, UL94V-0

Electrical

Current Rating: 1.0A
 Contact Resistance: 30mOhm max.
 Insulation Resistance: 1000MOhm min.
 Withstanding Voltage: 250V AC for 1 minute
 Operating Temperature: -40°C to +105°C

SP127MHSMDxxS-3000

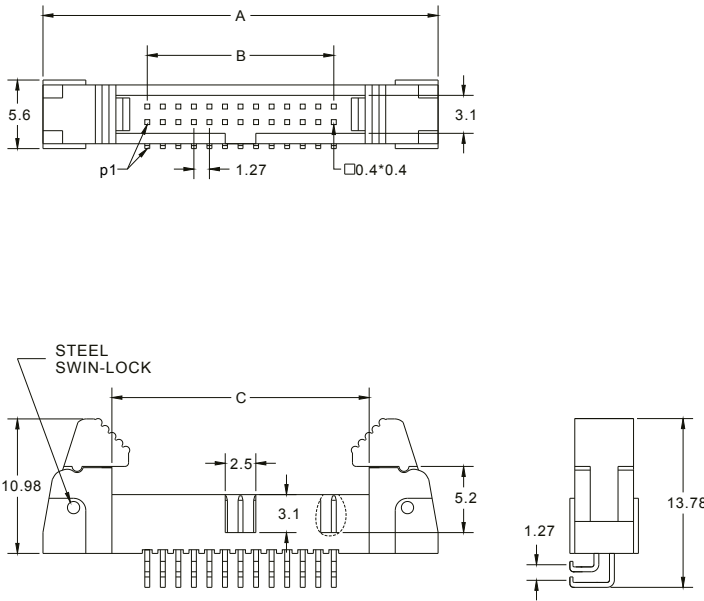


- 0 = Tube with pad
- 1 = Tube without pad
- 2 = Tape & Reel with pad
- 0 (Standard)
- 0 = Without locating peg
- 1 = With plastic locating peg
- 2 = With metal locking clip
- 1 = RL1 = gold plated, 500 mating cycles
- 2 = RL2 = gold plated, 250 mating cycles
- 3 = RL3 = gold plated, 50 mating cycles
- 4 = RL4 = tin plated, 50 mating cycles
- S = Straight

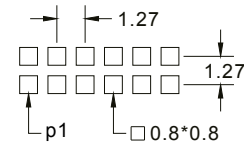


MALE HEADER, ANGLED, SMD

PITCH 1.27 x 1.27mm



No. of Contacts	A	B	C
6	19.58	2.54	8.32
8	20.85	3.81	9.59
10	22.12	5.08	10.86
12	23.39	6.35	12.13
14	24.66	7.62	13.40
16	25.93	8.89	14.67
20	28.47	11.43	17.21
22	29.74	12.70	18.48
26	32.28	15.24	21.02
30	34.82	17.78	23.56
34	37.36	20.32	26.10
40	41.17	24.13	29.91
44	43.71	26.67	32.45
50	47.52	30.48	36.26
60	53.87	36.83	42.61
68	58.95	41.91	47.69
80	66.57	49.53	55.31



Recommended P.C.B. Layout

Specifications

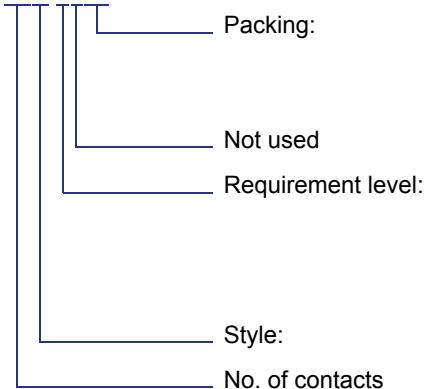
Material

Contacts: Phosphor Bronze
 Insulator: LCP, glass reinforced, UL94V-0

Electrical

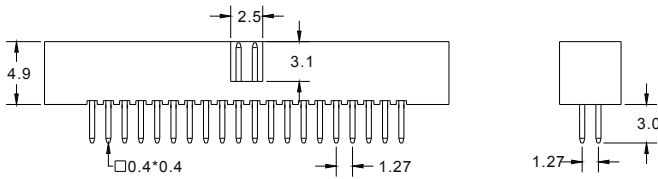
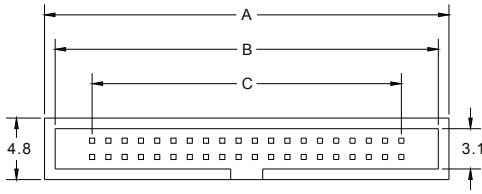
Current Rating: 1.0A
 Contact Resistance: 30mOhm max.
 Insulation Resistance: 1000MOhm min.
 Withstanding Voltage: 250V AC for 1 minute
 Operating Temperature: -40°C to +105°C

SP127MHSMDxxA-3000



- 0 = Tube with pad
- 1 = Tube without pad
- 2 = Tape & Reel with pad
- 0 (Standard)
- 1 = RL1 = gold plated, 500 mating cycles
- 2 = RL2 = gold plated, 250 mating cycles
- 3 = RL3 = gold plated, 50 mating cycles
- 4 = RL4 = tin plated, 50 mating cycles
- A = Angled





No. of Contacts	A	B	C
6	9.97	8.31	2.54
8	11.24	9.58	3.81
10	12.51	10.85	5.08
12	13.78	12.12	6.35
14	15.05	13.39	7.62
16	16.32	14.66	8.89
20	18.86	17.20	11.43
22	20.13	18.47	12.70
24	21.40	19.74	13.97
26	22.67	21.01	15.24
30	25.21	23.55	17.78
34	27.75	26.09	20.32
40	31.56	29.90	24.13
44	34.10	32.44	26.67
50	37.91	36.25	30.48
60	44.26	42.60	36.83
68	49.34	47.68	41.91
80	56.96	55.30	49.53

Specifications

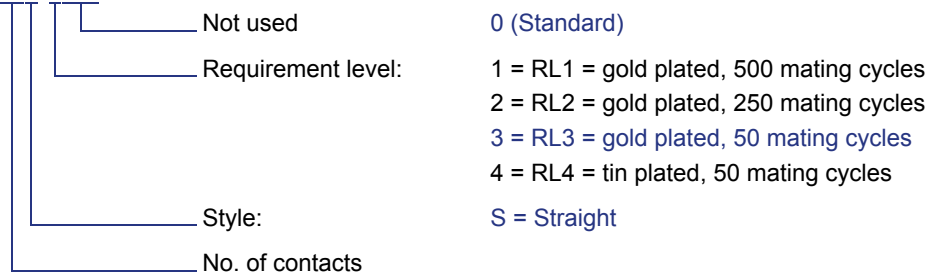
Material

Contacts: Phosphor Bronze
 Insulator: LCP, glass reinforced, UL94V-0

Electrical

Current Rating: 1.0A
 Contact Resistance: 30mOhm max.
 Insulation Resistance: 1000MOhm min.
 Withstanding Voltage: 250V AC for 1 minute
 Operating Temperature: -40°C to +105°C

SP127BHxxS-3000



0 (Standard)

1 = RL1 = gold plated, 500 mating cycles

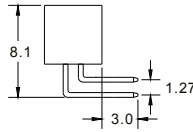
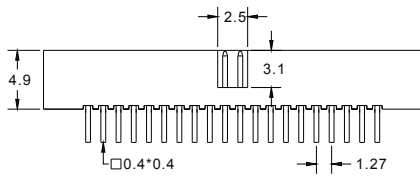
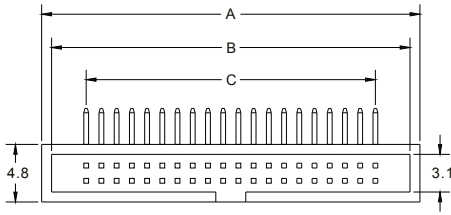
2 = RL2 = gold plated, 250 mating cycles

3 = RL3 = gold plated, 50 mating cycles

4 = RL4 = tin plated, 50 mating cycles

S = Straight





No. of Contacts	A	B	C
6	9.97	8.31	2.54
8	11.24	9.58	3.81
10	12.51	10.85	5.08
12	13.78	12.12	6.35
14	15.05	13.39	7.62
16	16.32	14.66	8.89
20	18.86	17.20	11.43
22	20.13	18.47	12.70
24	21.40	19.74	13.97
26	22.67	21.01	15.24
30	25.21	23.55	17.78
34	27.75	26.09	20.32
40	31.56	29.90	24.13
44	34.10	32.44	26.67
50	37.91	36.25	30.48
60	44.26	42.60	36.83
68	49.34	47.68	41.91
80	56.96	55.30	49.53

Specifications

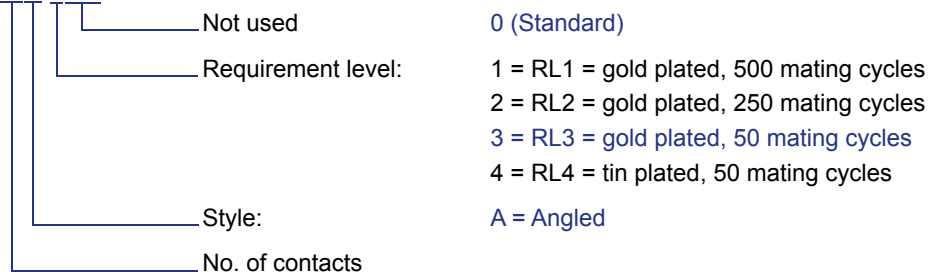
Material

Contacts: Phosphor Bronze
 Insulator: LCP, glass reinforced, UL94V-0

Electrical

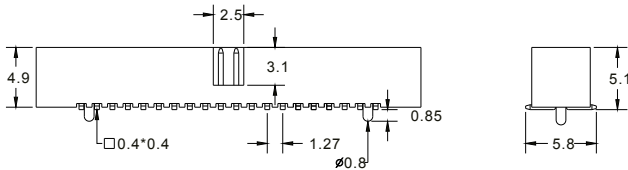
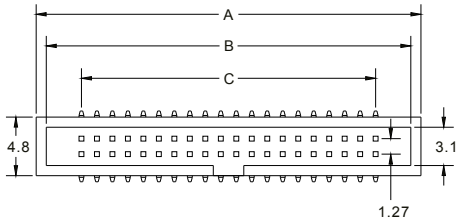
Current Rating: 1.0A
 Contact Resistance: 30mOhm max.
 Insulation Resistance: 1000MOhm min.
 Withstanding Voltage: 250V AC for 1 minute
 Operating Temperature: -40°C to +105°C

SP127BHxxA-3000

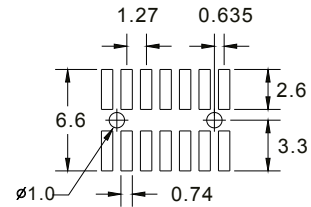


BOX HEADER, STRAIGHT, SMD

PITCH 1.27 x 1.27mm



No. of Contacts	A	B	C
6	9.97	8.31	2.54
8	11.24	9.58	3.81
10	12.51	10.85	5.08
12	13.78	12.12	6.35
14	15.05	13.39	7.62
16	16.32	14.66	8.89
20	18.86	17.20	11.43
22	20.13	18.47	12.70
24	21.40	19.74	13.97
26	22.67	21.01	15.24
30	25.21	23.55	17.78
34	27.75	26.09	20.32
40	31.56	29.90	24.13
44	34.10	32.44	26.67
50	37.91	36.25	30.48
60	44.26	42.60	36.83
68	49.34	47.68	41.91
80	56.96	55.30	49.53



Recommended P.C.B. Layout

Specifications

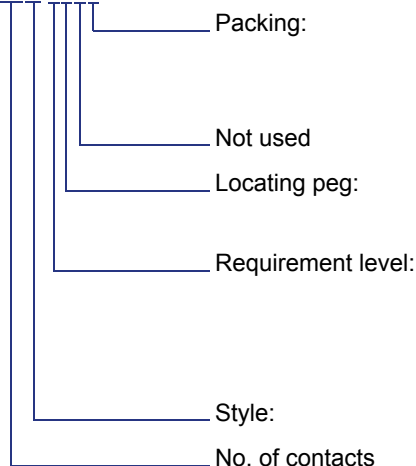
Material

Contacts: Phosphor Bronze
 Insulator: LCP, glass reinforced, UL94V-0

Electrical

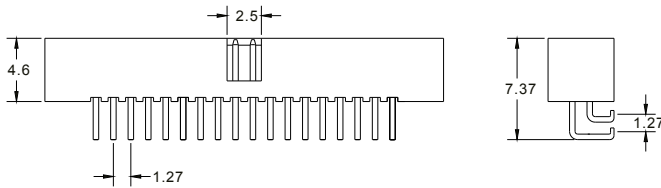
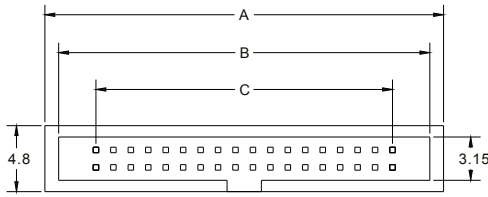
Current Rating: 1.0A
 Contact Resistance: 30mOhm max.
 Insulation Resistance: 1000MOhm min.
 Withstanding Voltage: 250V AC for 1 minute
 Operating Temperature: -40°C to +105°C

SP127BHSMDxxS-3000

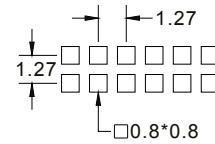


- 0 = Tube with pad
- 1 = Tube without pad
- 2 = Tape & Reel with pad
- 0 (Standard)
- 0 = Without locating peg
- 1 = With locating peg
- 1 = RL1 = gold plated, 500 mating cycles
- 2 = RL2 = gold plated, 250 mating cycles
- 3 = RL3 = gold plated, 50 mating cycles
- 4 = RL4 = tin plated, 50 mating cycles
- S = Straight





No. of Contacts	A	B	C
6	9.97	8.31	2.54
8	11.24	9.58	3.81
10	12.51	10.85	5.08
12	13.78	12.12	6.35
14	15.05	13.39	7.62
16	16.32	14.66	8.89
20	18.86	17.20	11.43
22	20.13	18.47	12.70
26	22.67	21.01	15.24
30	25.21	23.55	17.78
34	27.75	26.09	20.32
40	31.56	29.90	24.13
44	34.10	32.44	26.67
50	37.91	36.25	30.48
60	44.26	42.60	36.83
68	49.34	47.68	41.91
80	56.96	55.30	49.53



Recommended P.C.B. Layout

Specifications

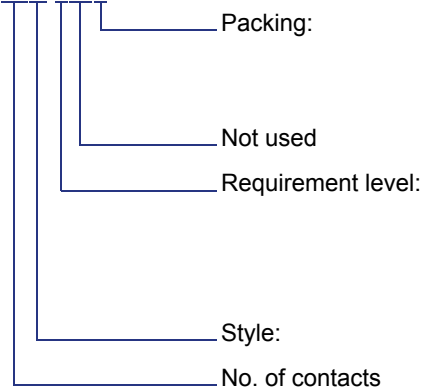
Material

Contacts: Phosphor Bronze
 Insulator: LCP, glass reinforced, UL94V-0

Electrical

Current Rating: 1.0A
 Contact Resistance: 30mOhm max.
 Insulation Resistance: 1000MOhm min.
 Withstanding Voltage: 250V AC for 1 minute
 Operating Temperature: -40°C to +105°C

SP127BHSMDxxA-3000



- 0 = Tube with pad
- 1 = Tube without pad
- 2 = Tape & Reel with pad
- 0 (Standard)
- 1 = RL1 = gold plated, 500 mating cycles
- 2 = RL2 = gold plated, 250 mating cycles
- 3 = RL3 = gold plated, 50 mating cycles
- 4 = RL4 = tin plated, 50 mating cycles
- A = Angled

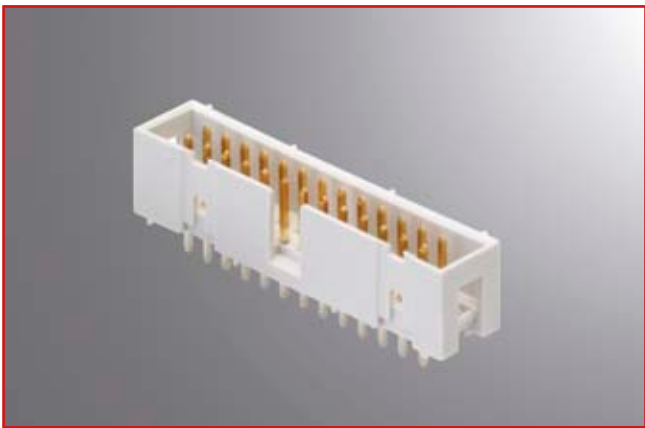


OPTIONS



Cable connector

- Kinked legs for transition connector
- Strain relief for female header
- Guiding lug for female header
- Strain relief for transition connector
- Closed cavities for coding
- Different moulding options
- High retention force contacts
- Various plating options
- Multi contact termination



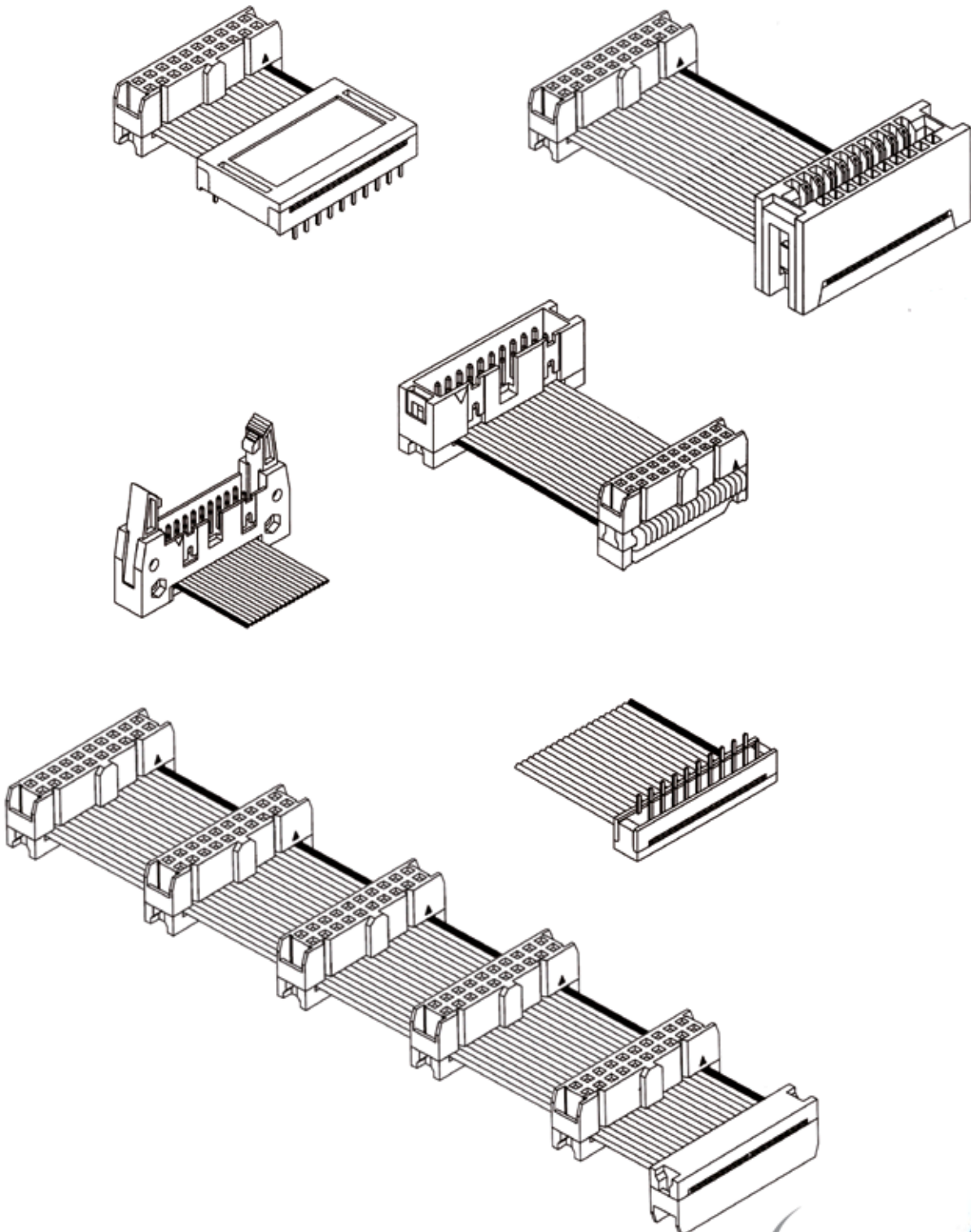
PCB connector

- Kinked legs for socket connector
- Missing pins for coding
- Different pin length
- Various plating options
- Smaller pin square for box header
- Smaller pin square for male header
- Metal clips mount for box header
- Short / long latches for male header
- Packing (Tubes, T&R, Blister)
- Custom specific connectors



CABLE ASSEMBLIES

We manufacture flatcable assemblies according to your specification.



CABLE ASSEMBLIES



Connector

- Assembly with SPEEDflex connectors
- Assembly with connectors of other manufacturers
- Special flat cable connectors like:
 - D-SUB, Edgcard, SCSI, Centronics,
 - DIN41612/EN IEC 60603-2 connectors

Cable

- Individual printing of single cables
- Coloured cable
- Halogen free cable
- Round-flat cable
- Shielded / unshielded cable
- Splice cable
- Single wire connections
- Shrink tube protection

Connection

- 1:1 or crossed connections
- Multi connector assemblies
- Left / right and up / down orientation
- Y-cables
- Glued connector covers for best fixation
- Ferrites
- Moulded strain reliefs and sealings

Test + Packing

- Standard: 100% test on circuit and short cut
- High voltage test
- Custom specific stress test (vibration, shock...)
- Labeling and packing according to customer request

UL certified manufacturing



**SPEED GmbH
Elektronik Vertrieb**
August-Bendler-Str. 3 B
58332 Schwelm
Germany
Phone: +49 2336-474 50
Fax: +49 2336-474 520
info@speed-electronics.com
www.speed-electronics.com

SPEED Electronics Ltd.
Ennis Industrial Estate
Gort Road Ennis
Co. Clare Ireland
Phone: +353 65-686 90 44
Fax: +353 65-686 94 46
info@speed-electronics.ie
www.speed-electronics.ie

SPEED Asia Ltd.
6F., No.36, Song De Road
Taipei
Taiwan, R.O.C.
Phone: +886 2-878 058 81
Fax: +886 2-878 058 82
info@speed-electronics.com
www.speed-electronics.com

SPEED Deutschland GmbH
Kalver Str. 25a
58515 Lüdenscheid
Germany
Phone: +49 2351-674 200
Mobile: +49 171-319 62 10
Fax: +49 2351-674 20 20
info@speed-electronics.com
www.speed-electronics.com

SPEED Italia S.r.l.
Via Crocevia 12
39057 Appiano (BZ)
Italy
Phone: +39 3483-207 131
Mobile: +39 335-675 61 88
Fax: +39 0471-664 216
info@speed-electronics.com
www.speed-electronics.com

SPEED Group:
Cosmos Electronic Italiana S.r.l.
Via Crocevia 12
39057 Appiano (BZ) Italy
Phone: +39 0471-670 600
Fax: +39 0471-664 216
www.cosmosel.it

Intronics BV, Netherlands
TKH Group, Netherlands